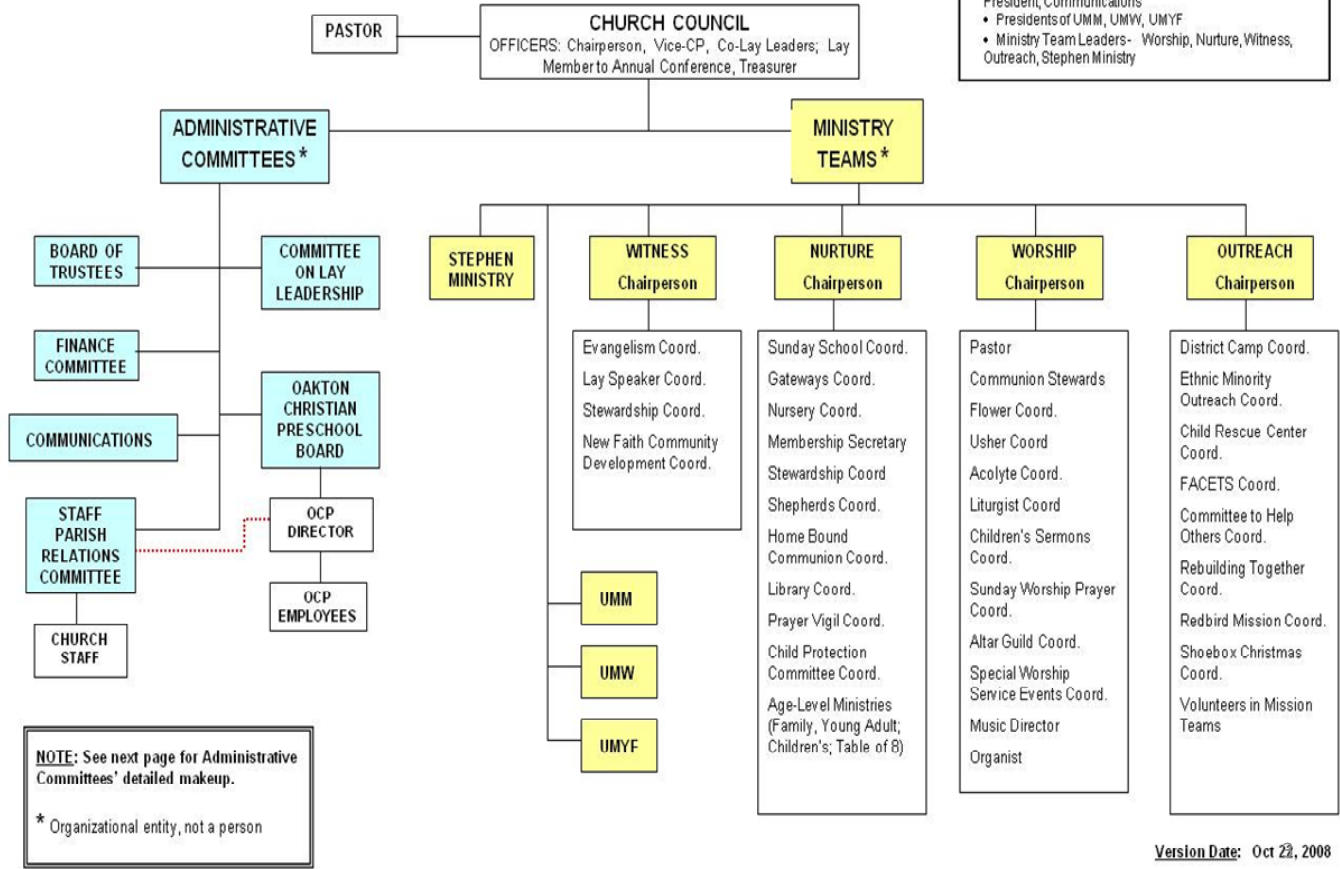
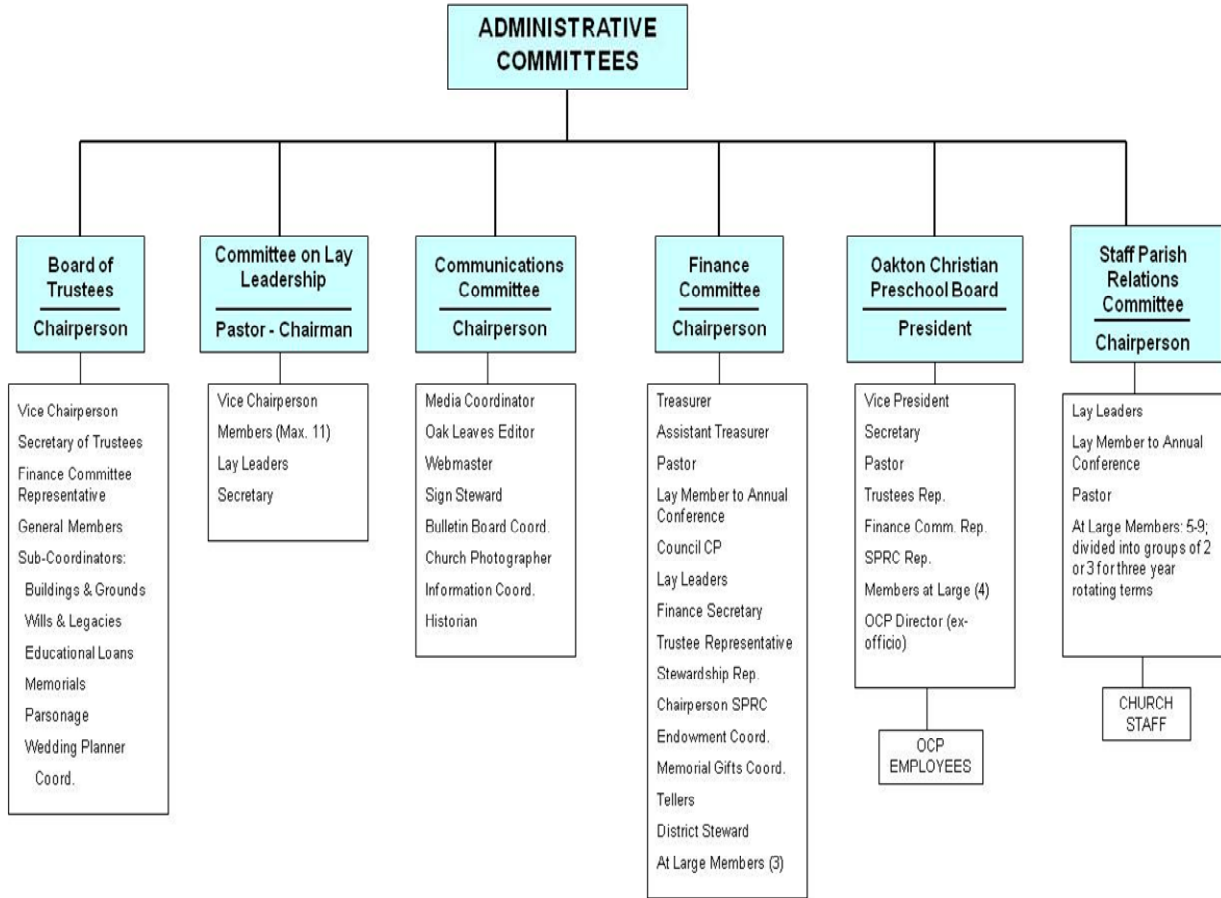


**OAKTON UNITED METHODIST CHURCH
ORGANIZATIONAL PLAN (PROPOSED beg. 2009)**

In addition to the Officers of the Council, the following are members of the Council:

- Chairpersons of SPRC, Finance, Trustees; OCP Board President, Communications
- Presidents of UMM, UMW, UMYF
- Ministry Team Leaders- Worship, Nurture, Witness, Outreach, Stephen Ministry





**Oakton United Methodist Church
2010 Ministry Leaders**

Church Council	Karen Budd, Chair	Finance	Giles Sinkewiz, Chair
	Bruce Long, Vice Chair		Bill Doughten, Treasurer
	Joann Edwards, At Large		Stan Ellis, Assistant Treasurer
	Phil Hannum, At Large		Geddis Kerr, Teller Coordinator
	Stan Ellis, At Large		Dick Javins, Memorial Gifts
	Linda Sveinsson, At Large		Barbara Feurtado, Secretary
	Vacant, At Large		Janet Colvin, At Large
	Betty Harwick, Secretary		Carol Friesen, At Large
	Sammye Justice, Lay Leader		Hank Walton, At Large
	Alex Watson, Lay Leader		Georgianne Kennedy, At Large
	Jim Walton, AC Lay Member		Vacant, At Large
	Vacant, Reserve to AC		Karen Budd, CC Chair
	Bill Daughten, Treasurer		Pastor Don Hawks
	Odette Long, SPRC		Jim Walton, AC Lay Member
	Giles Sinkewiz, Finance		Sammye Justice, Lay Leader
	Dick Javins, Trustees		Alex Watson, Lay Leader
	Carol Friesen, Stephen Ministry		Dale Hutchinson
	Jill Ririe, Communications		Odette Long, SPRC Rep
	Larry Ekberg, OCP Board		Dick Javins, Trustees Rep
	Elsie Benson, UMW	OCP Board	Larry Ekberg, Chair
	Vacant, UMYF		Glo Hadermann, Director
	Bruce Long, UMM		Karen Deege, At Large
	Stan/Frances Ellis, Witness		Greg Perrier, At Large
	Marge Javins, Worship		Pastor Don Hawks
	Barbara McGilvray, Outreach		Barbara Feurtado, Secretary
	Lois Hidalgo, Nurture		Lois Hidalgo
Trustees			Reps from Finance, SPRC, Trustees
	Dick Javins, Chair		
	Wayne Malick, Vice Chair		
	Giles Sinkewiz, Finance Rep.	Staff Parish Relations	Odette Long, Chair
	Joan Korn		Leslie Margolis
	Jim Ivey		Sonya Saylor
	Alvin Kitchen		Jennifer Fisher
	Elsie Benson, Secretary		Jillie Terrill
	Sterling Wilcox, B&G		Bryan Deege
	Daryl Hutchinson, Parsonage		Pastor Don
			Sammye Justice, Lay Leader
Endowment Committee			
	Bill VanStavoren		Alex Watson, Lay Leader
	Dick Javins		Jim Walton, Lay Member to AC
	Alvin Kitchen	Committee on Lay Leadership	Pastor Don, Chair
	Giles Sinkewiz		Lois Hidalgo
	Pastor Don Hawks		Wayne Malick
UMC Organizations	UMM Pres., Bruce Long		Barbara Fisher
	UMW Pres., Elsie Benson		Aleta Rauch
	UMYF		Bruce Long, Church Council VC
			Sammye Justice, Lay Leader

			Alex Watson, Lay Leader
			Betty Harwick, Church Council Secty.
Events Mgt. Team	Bruce Long, CC VC	Nurture	Lois Hidalgo, Chair
	Sammye Justice, Lay Leader		Bruce Long, Sunday School Coord.
	Alex Watson, Lay Leader		Sonya Saylor, Nursery Coordinator
	Lois Hidalgo, Nurture		Mindy Fellows, Gateway Coord.
	Barbara McGilvray, Outreach		Barbara Feurtado, Membership Secty
	Marge Javins, Worship		Vacant, Stewardship Coordinator
	Stan/Frances Ellis, Witness		Virginia Mylks/Daryl Hutchinson, Shepherds Coordinators
	Pastor Don, Ex-officio		Edith Ashworth, Homebound Communion Coordinator
	Communications, Ex-officio		Edith Ashworth/Frances Ellis, Library Coordinators
Communications	Jill Ririe, Chair/Webmaster		Helen Albanese, Prayer Vigil Coord.
	Frances Ellis, Oak Leaves Ed		Odette Long, Child Protection Coord.
	Geddis Kerr, Sign Steward		Wanda Kirkpatrick, Family Ministries
	Steve Honda, Public Affairs		Lisa Lanser, Young Adults
	Tori Terril/Vacant, Bulletin Board Coordinators	Worship	Marge Javins, Chair
	Dave Estus/Sarah Honda, Photographers		Daryl Hutchinson, Communion Coord.
	Jim Mc Gilvray, Email Coord.		Dannye Ivey, Usher/Acolyte Coord.
	Shirley Young/Vacant, Historians		Betty Harwick, Flower Coordinator
Witness	Frances/Stan Ellis, Chairs		Kay Blocher, Prayer Team Coord.
	Pastor Don, All Things New		Cheng Tang/Bill Korn, Liturgist Coord.
Outreach	Barbara McGilvray, Chair		Carol Mansfield, Altar Guild Coord.
	Elsie Benson		Sammye Justice, Child Time Coord.
	Jim McGilvray		Pastor, Organist, Music Director
	Sandy Butler	Staff	Pastor, Don Hawks
	Patty Harnish		Organist, Jan Murley
	Frances Honda		Office Admin., Barbara Feurtado
	Dawna Mussad		Director of Music, Shannon Wise
	Nancy Saylor		Custodian, Rick Fraser
	Stephanie Swain		Chapel Choir Director, Jan Smith
Stephen Ministry	Carol Friesen, Leader		Nursery Director, Olesya Ellis
	Patty Harnisch		Youth Leaders, Deb and Cecil Porter
	Jessica Brenchick		OCP Director, Glo Hadermann
	Bill Korn		
	Ted Lyons		
	Willi Dalaba		
	Jan Smith		
	Pastor Don		